

AQUAPURE ---- Ozone Module(AOT-DC Series)

PRODUCT DESCRIPTION:

This product “ozone module” uses the latest duran tube with 316 Stainless Steel / Titanium electrode technology, which is the best to get stable ozone output and high ozone concentration.

This series of ozone module can be widely applied in varied industries for sterilization and disinfection. You can save lots of costs as they have a long life and high performance.



CONTACT INFORMATION :

AQUAPURE (SHEN ZHEN) OZONE TECHNOLOGY
R1102,University Town Business Park, Lishan
Road, Taoyuan, Nanshan, 518055 Shenzhen, China

Email: info@aquapureasia.com

Tel.: 0086-755-26605963

Cell: 0086-13715076653

Skype: mendy01271990

Website: www.aquapureozone.com

AQUAPURE ---- Ozone Module Applications

1. Odor Control:

- Industrial odor control
- Home, Hotel
- Hospital
- Zoo

2. Agriculture Industry:

- Irrigation
- Vegetables and fruit preservation

3. Water Treatment:

- Drinking water
- Bottle water
- Swimming pool
- Waste water treatment

4. Health care

- SPA
- Bath

5. Meat and Food

- Food factory
- Slaughterhouse
- Poultry breeding
- Fish farm

6. Medical Device Industry:

- Surgical instruments
- Dental products

7. Laundry:

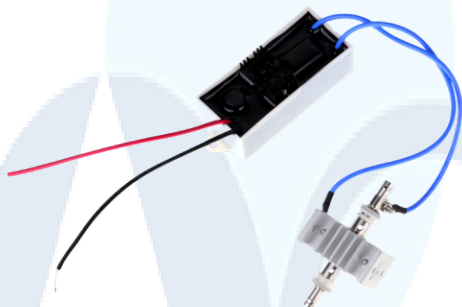
- Household washing
- Hotel
- Hospital
- Old people home

8. Pipe cleaning:

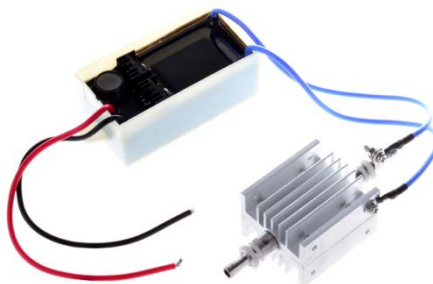
- Beer piping
- Urinal piping

AQUAPURE ---- Ozone Module(AOT-DC Series)

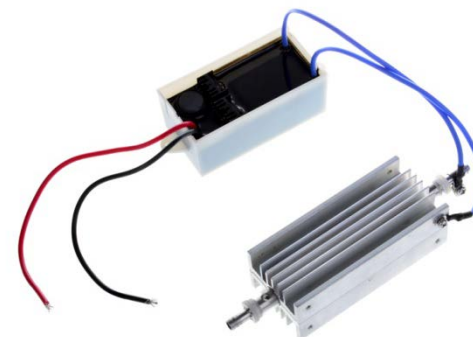
AOT-D-200



AOT-D-500



AOT-D-700



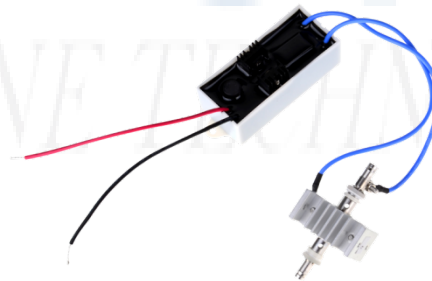
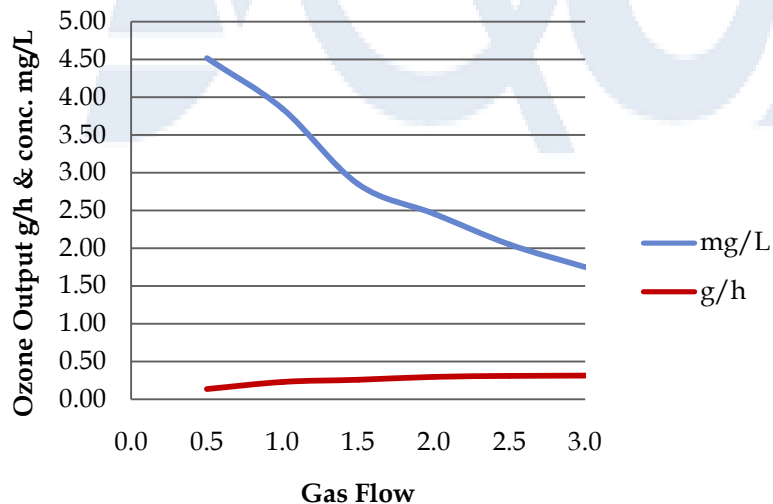
Model No.	Ozone Output	Gas Flow	Generator Configuration		Recommended Gas flow	Size L x W x H (mm)	Weight (kg)
	g/h	L/min	Tube	Electrode	Dry air ,<20% RH, <25°C		
AOT-D-200	0.2	1	Duran Tube	316 Stainless Steel	1.0 L/min	Electronic:100x35x26mm Generator: :73.6x40x30mm	0.17
AOT-D-500	0.5	2.5			2.5 L/min	Electronic:100x41x33mm Generator:100.6x40x30mm	0.30
AOT-D-700	0.7	8			8.0 L/min	Electronic:100x41x33mm Generator:145.6x40x30mm	0.35

AQUAPURE ---- Ozone Module (AOT-D-200)

Dry air 20~25°C 20% RH		
Gas flow L/min	Ozone Conc. mg/L	Ozone Flow g/h
0.5	4.52	0.14
1.0	3.85	0.23
1.5	2.85	0.26
2.0	2.46	0.30
2.5	2.05	0.31
3.00	1.75	0.32

TECHNICAL SPECIFICATION	
Ozone Output	0.2 g/h at 1 L/min, < 20%RH at 25°C dry air
Ozone Concentration	> 4.0 mg/L at 0.5 L/min gas flow
Gas Flow	1 L/min recommended
Material	316 Stainless steel electrode (Titanium electrode optional)& duran tube
Output Connection	OD 5.0 mm
Continuous operation	24 h/day with cooling system
Ozone generating method	Corona discharge
Input voltage	12 VDC
Power input	< 6 W
Operating temperature	-10 °C ~ +60 °C
Storage temperature	-20 °C ~ +70 °C
Size Generator L x W x H (mm)	73.6x40x30 mm
Size Electronic L x W x H (mm)	100x35x26 mm potted
Product Weight	0.17 kgs /pc
Able to be used	water /air/ medical

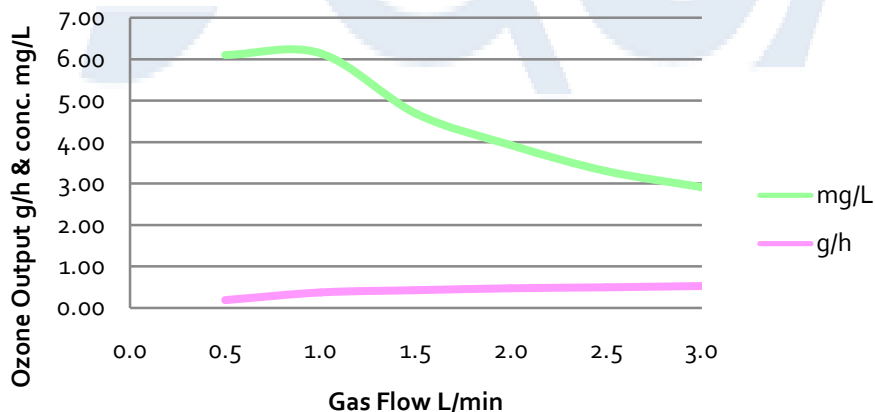
AOT-D-200 Ozone Output and Concentration Curves



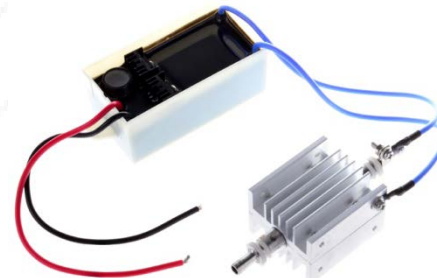
AQUAPURE ---- Ozone Module (AOT-D-500)

Dry air 20~25°C 20% RH		
Gas flow L/min	Ozone Conc mg/L	Ozone Output g/h
0.5	6.10	0.18
1.0	6.14	0.37
1.5	4.69	0.42
2.0	3.92	0.47
2.5	3.3	0.50
3.0	2.91	0.52

AOT-D-500 Ozone Output and Concentration Curves



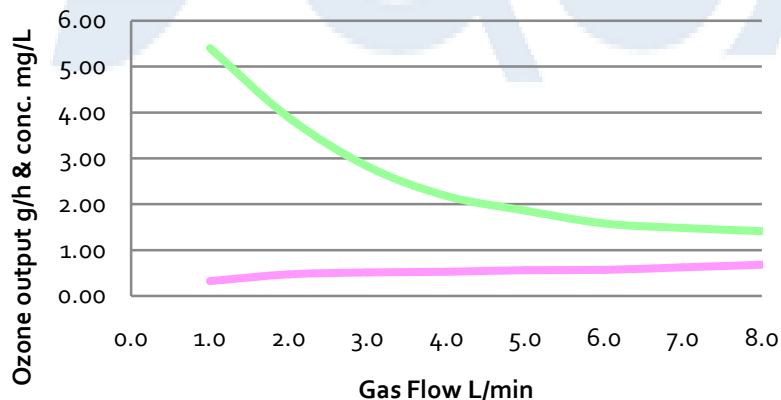
TECHNICAL SPECIFICATION	
Ozone Output	0.5 g/h at 2.5L/min, < 20% RH at 25°C dry air
Ozone concentration	> 5.0 mg/L at 1.0 L/min gas flow
Gas Flow	2.5 L/min recommended
Material	316 Stainless steel electrode (Titanium electrode optional)& duran tube
Output connections	OD 5.0 mm
Continuous operation	24 h/day with cooling system
Ozone generating method	Corona discharge
Input voltage	12 VDC
Power input	< 10 W
Operating temperature	-10 °C ~ +60 °C
Storage temperature	-20 °C ~ +70 °C
Size Generator L x W x H (mm)	100.6x40x30 mm
Size Electronic L x W x H (mm)	100x41x33 mm potted
Product Weight	0.30 kgs /pc
Able to be used	water /air/ medical



AQUAPURE ---- Ozone Module (AOT-D-700)

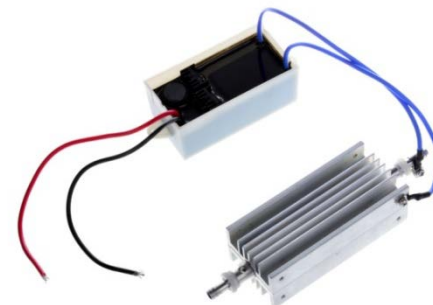
Dry air 20~25°C 20% RH		
Gas flow L/min	Ozone Conc. mg/L	Ozone Output g/h
1.0	5.4	0.33
2.0	3.89	0.47
3.0	2.82	0.51
4.0	2.18	0.52
5.0	1.86	0.56
6.0	1.58	0.57
7.0	1.48	0.62
8.0	1.41	0.68

AOT-D-700 Ozone Output and Concentration Curves

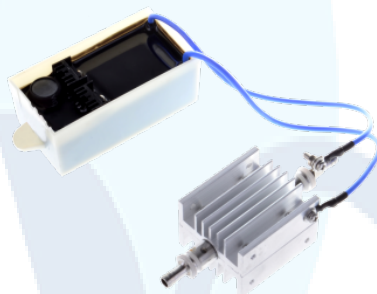


TECHNICAL SPECIFICATION	
Ozone Output	0.7 g/h at 8.0 L/min, < 20% RH at 25 °C dry air
Ozone concentration	> 5.0 mg/L at 1.0 L/min air flow
Gas Flow	8.0 L/min recommended
Material	316 Stainless steel electrode & duran tube
Output connections	OD 5.0 mm
Continuous operation	24 h/day with cooling system
Ozone generating method	Corona discharge
Input voltage	12V DC
Power input	< 12 W
Operating temperature	-10 °C ~ +60 °C
Storage temperature	-20 °C ~ +70 °C
Size Generator L x W x H(mm)	145.6x40x30 mm
Size Electronic L x W x H(mm)	100x41x33 mm potted
Product Weight	0.35 kgs/pc
Able to be used	water /air/ medical

— mg/L
— g/h



AQUAPURE ---- Ozone Module w/ Housing



AOT-FD-500

Model No.	Ozone Output	Gas Flow	Generator Configuration		Recommended Gas Medium	Size L x W x H (mm)	Weight (kg)
	g/h	L/min	Tube	Electrode	Dry air, <20% RH, <25°C		
AOT-FD-500	0.5	3.0	Quartz Tube	304 S.S	3.0 L/min	130 x 60.5 x 79 (housing)	0.55

Dry air 20~25°C 20% RH		
Gas flow	Ozone Conc.	Ozone Output
L/min	mg/L	g/h
1.0	5.67	0.34
2.0	3.77	0.45
3.0	2.82	0.51
4.0	2.35	0.56
5.0	1.86	0.56
6.0	1.71	0.62

TECHNICAL SPECIFICATION	
Ozone Output	0.5 g/h at 3.0 L/min at < 20% RH 25°C dry air
Ozone concentration	> 5.0 mg/L at 1 L/min gas flow
Gas Flow	3.0 L/min recommended
Material	304 Stainless steel electrode & quartz tube
Output connections	OD 5.0 mm
Continuous operation	24 h/day
Cooling system	Air cooling, 30 CFM fan
Ozone generating method	Corona discharge
Input voltage	12 VDC
Power input	< 12 W
Operating temperature	-10 °C ~ +60 °C
Storage temperature	-20 °C ~ +70 °C
Size L x W x H	130 x 60.5 x 79 mm
Product Weight	0.55 kgs /pc
Able to be used	water or air treatment

